

ESD / STATIC CONTROL  
Product & Services



# RDM Industrial Products Inc.

1652 Watson Court  
Milpitas, California 95035  
phone (408) 945-8400 fax (408) 945-8433



**CAUTION**  
**STATIC SENSITIVE AREA**

 **Gibo/Kodama Chairs**





# RDM Industrial Products Inc.

1652 Watson Court  
Milpitas, California 95035  
phone (408) 945-8400 fax (408) 945-8433



### Personnel Grounding

Wrist Straps, Heel Grounders, Disposable Ground Straps, Constant ESD Monitor.



### Floor Products and Paint

Urethane Paints, Primer/Sealer, Floor Finishes, Stripper, Neutralizer, Floor Finish Burnisher /Restorer, Conduction Flooring Cleaner, Neutral Cleaner, Carpet Floor Guard Treatment



### Testers and Monitors

Combo Testers and Loggers, Standard Resistivity Tester and Accessories, Smock Tester, Constant Floor Monitor, Constant ESD Monitor.



### Antistat and Cleaners

Cleanroom Topical Antistat, Dissipative and Static Control Mat Cleaners, Plastic Cleaner, Glass Cleaner, Stainless steel Cleaner, ESD Cleaner and EPA Disinfectant



### Mat Materials

Static Control Matting, Contamination Mats.



### Accessories

Waste Paper Basket and Liners, Aisle Warning Tape, Automatic Soap Dispenser



### Mailers and Bins

B- Flute and E-Flute Mailers. Open ESD Protective Corrugated Shelf Bin Boxes



### Field Service Grounding

Field Service Kit, Field Meter



# ELECTROSTATIC IONIZERS



## RDM Industrial Products Inc.

1652 Watson Court  
Milpitas, California 95035  
phone (408) 945-8400 fax (408) 945-8433



HPS II HPX-I HPN



Model 1100 High Output  
Static Bar with Ion-Light  
Technology



Model 21 Shockless  
Static Bar

Ionizing nozzles are designed for fixed applications requiring a narrow stream of ionized air or nitrogen on a continuous basis. HPN models are designed to be mounted singly, in series, or on an air manifold.



Model 190M Ionizing Air  
Gun for use in clean room  
applications.



Model 190C Ionizing Air  
Gun for use in non-clean  
room applications.



Model CPS Ionizing Air  
Gun is a high performance  
ionization source that  
provides a pin-point ionized  
air stream.



Model HPS III Ionizing Air  
Gun is ideally suited for  
operations where both hands  
are busy with the production  
process.





# RDM Industrial Products Inc.

1652 Watson Court  
Milpitas, California 95035  
phone (408) 945-8400 fax (408) 945-8433



Model IT-7000  
Tabletop Ionizing  
Transport System



Model 465  
Ultra High Ionizing Blower is designed for a fixed  
application. The higher air volume production of  
ionization allows the unit to be placed further from the  
affected area.



Model HM-8000  
Over Head Ion Transport System  
ESD Protection in electronics  
and or lab applications



Model 320  
Designed for permanent production lines where high  
volumes of ionized air are required.





# RDM Industrial Products Inc.

1652 Watson Court  
Milpitas, California 95035  
phone (408) 945-8400 fax (408) 945-8433



## ESD GARMENTS



### Sterling

- Lightweight material
- Traditional collar
- Raglan Sleeve
- Waist or knee length
- Groundable
- Three patch pockets
- Blue, white or teal

### Hallmark

- Our most popular Garment
- ESD grid
  - Knit cuff grounds wearer
  - Snap on the pocket for attaching coil cord to common point ground.
  - Blue, teal, royal blue, and burgundy

### Traditional

- Lapel style collar and set in sleeves give a smart look to this garment.
- Snap adjustment on sleeves
  - Three patch pockets.
  - Comes in all standard colors

w w w . r d m - i n d . c o m



ESD GARMENTS – CONT'D



RDM Industrial Products Inc.

1652 Watson Court  
Milpitas, California 95035  
phone (408) 945-8400 fax (408) 945-8433



**Econoshield**

Economic Static Protection - Many features included in our other garments. This series includes:

- Three roomy patch pockets
- Lapel style collar

**X2 Garment**

This patented Garment features dual paths to ground, which allow the garment to be continuously grounded and monitored w/o use of wrist straps.

Technical information available upon request.

- Knit cuffs
- Three patch pockets,
- Dual snaps on pocket.

**V-Neck**

We remove the lapels to give you a lower cost, More Streamlined look. Available in light weight and Medium weight material and with knit cuff

w w w . r d m - i n d . c o m





# RDM Industrial Products Inc.

1652 Watson Court  
Milpitas, California 95035  
phone (408) 945-8400 fax (408) 945-8433



## STAMINA 7000 CLEANROOM SERIES WITH SADDLE SEAT



Class 1000 or Class 100 Task Chairs using saddle style seats. For workers in cleanroom suits who are sliding off of their standard vinyl seats. Options include:

- Arms
- Four height ranges
- ESD and Cleanroom packages
- Variety of Casters or Glides

## STAMINA 3000 CLEANROOM SERIES



Class 1000 or Class 100 Task Chairs meeting current cleanroom standards. Options include:

- Arms
- Short Seat,
- Four height ranges
- ESD package
- Variety of Casters or Glides

## CLASS10 CLEANROOM CHAIRS



Fully ergonomic Class 10 Air Exchange Cleanroom Chairs with ESD option. Foam and airborne particulate are not exposed to cleanroom atmosphere. Options include:

- Capacious seat
- Three height ranges
- Variety of Casters or Glides

## REPON MID-MANAGEMENT CHAIR



Fully ergonomic mid-management task chairs featuring ratcheting back, sliding seat, swivel, adjustable arms and ESD option





# RDM Industrial Products Inc.

1652 Watson Court  
Milpitas, California 95035  
phone (408) 945-8400 fax (408) 945-8433



## HARSH ENVIRONMENT TASK CHAIRS



Fully ergonomic harsh environment chairs for corrosive atmospheres or frequent wash down. Chairs feature: Nylon base or Nylon dipped base, Nylon footring or Nylon dipped footring, control/cylinder plastic covers, stainless steel caster stems and stainless steel threaded studs. Three height ranges are offered

## SPECIAL APPLICATION SERIES



Fabric or vinyl stools with ESD or Cleanroom options and chairs with Skinned Polyurethane seats and back. Three height ranges are offered. SitStands are also available

## SYNCHRON 4000 SERIES CAPACIOUS CHAIRS



Capacious task chairs for offices and production areas. Options include: Arms, short seat, three height ranges, ESD and cleanroom packages, variety of casters or glides

## STAMINA 3000 SERIES



Stamina task chairs for offices and production areas with either contour or waterfall seats. Options include: Arms, short seat, four height ranges, ESD and cleanroom packages, variety of casters or glides





# RDM Industrial Products Inc.

1652 Watson Court  
Milpitas, California 95035  
phone (408) 945-8400 fax (408) 945-8433



# BIOFIT CHAIRS & STOOLS

	<b>Engineered Seating for Productivity</b>							<b>13-Year Warranty</b>	<b>Effective Ergonomics</b>	<b>Design by Function</b>

w w w . r d m - i n d . c o m



# RDM Industrial Products Inc.

1652 Watson Court  
Milpitas, California 95035  
phone (408) 945-8400 fax (408) 945-8433



# BIOFIT CHAIRS & STOOLS



AVAILABLE

w w w . r d m - i n d . c o m





# RDM Industrial Products Inc.

1652 Watson Court  
Milpitas, California 95035  
phone (408) 945-8400 fax (408) 945-8433



## ESD / STATIC CONTROL CHAIRS

Chrome plated metal parts, metal-to-metal contact points, conductive glides or casters, drag chain and ESD upholstery.



**Backrest:** 14 1/2" wide x 9 1/2" high, lumbar support, plastic protective panel  
**Seat:** concave, 18 1/2" wide x 16 1/2" deep x 3" thick with internal seat board bumper guard



**Backrest:** 14 1/2" wide x 9 1/2" high, lumbar support, plastic protective panel  
**Seat:** concave, 18 1/2" wide x 16 1/2" deep x 3" thick with internal seat board bumper guard



**ATF** Adjustable-height, 20" diameter cast aluminum footring; recommended for **C, N, P** bases with seat-height greater than 22"; not recommended for the **T** base



**LKRO** Conductive dual-wheel casters lock when the seat is occupied



**LKRU** Conductive dual-wheel casters resist movement when the seat is not occupied

**BIOFIT CHAIRS & STOOLS**  
**ESD / Static Control**





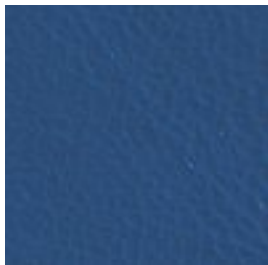
# RDM Industrial Products Inc.

1652 Watson Court  
Milpitas, California 95035  
phone (408) 945-8400 fax (408) 945-8433



## Grade B - Static Dissipative Vinyl Upholsteries

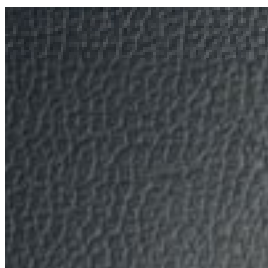
### Microcon Blue



Characteristics: triple layer upholstery consisting of vinyl skin, conductive thermoset membrane and solid vinyl back.. Non- exuding formulation allows little outgassing or plasticizer migration.

Abrasion resistance: some deterioration in 5000 cycles on CS-17 wheel, 500 gm. Wt. ( face only ).

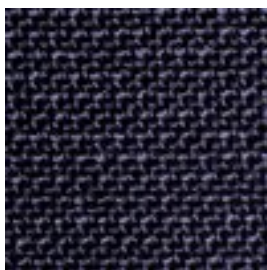
### Microcon Black



Cleaning: Clean with a solution of mild liquid soap and water, then wipe with a lint-free cloth. The use of any product containing silicone, alcohol, or solvents is not recommended, and it will adversely affect the ESD properties of the materials.

## Grade C - Static Dissipative Fabric Upholsteries

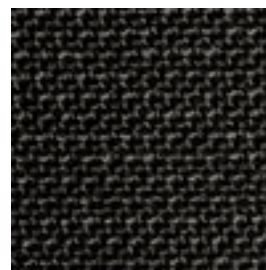
### SD44 Navy



### SD46 Grey Flannel



### SD18 Midnight



Fabric content: 29% wool, 70% glymlene, 1% Resistat

Abrasion resistance: heavy duty, exceeds 90,000 double rubs.

Flammability: CA 117, UFAC CLASS 1, BIFMA Class 1 Cleanability: S

BIOFIT CHAIRS & STOOLS  
ESD / Static Control

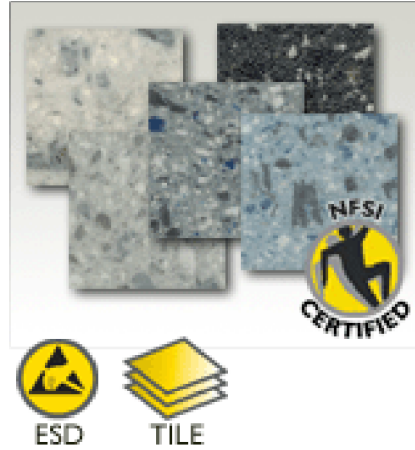


# RDM Industrial Products Inc.

1652 Watson Court  
Milpitas, California 95035  
phone (408) 945-8400 fax (408) 945-8433

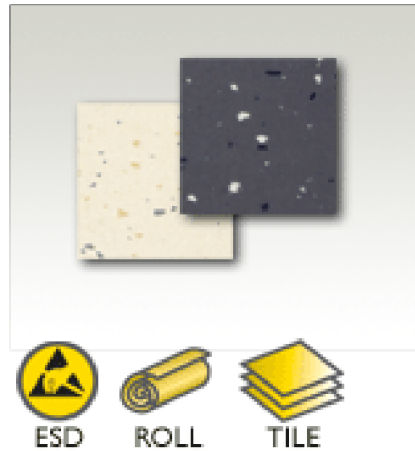


## ESD Conductive Euro-Flex High Traction

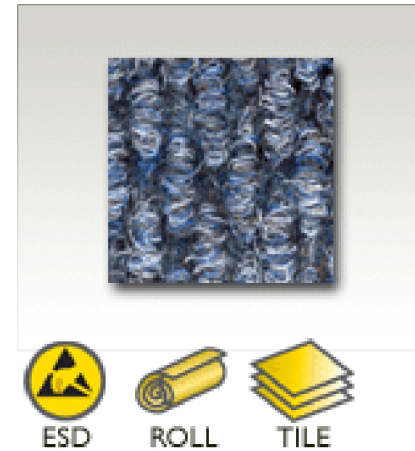


ESD Conductive AZO Industrial Carpet 10 OHMS, Rolls or Tiles all have integral conductive backing.

## ESD Dotfloor N-VHP Antistatic Rubber



## Conductive AZO Berber Carpet

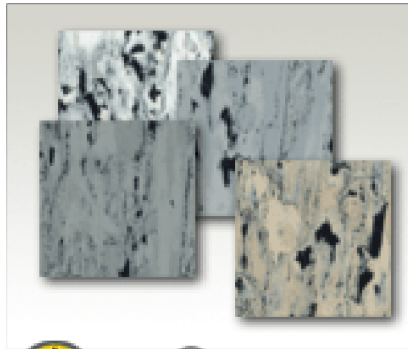


# RDM Industrial Products Inc.

1652 Watson Court  
Milpitas, California 95035  
phone (408) 945-8400 fax (408) 945-8433



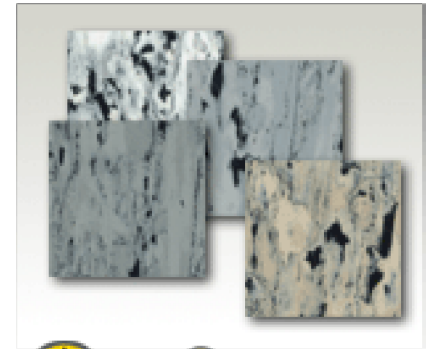
## ESD Unifloor UC Series



## ESD Unifloor U78 Series



## ESD Unifloor U Series



ESD Conductive AZO Industrial Carpet 10 OHMS, Rolls or Tiles all have integral conductive backing.

## ESD Conductive Euro-Flex





## RDM Industrial Products Inc.

1652 Watson Court  
Milpitas, California 95035  
phone (408) 945-8400 fax (408) 945-8433



### One – Point Pen Probe



#### Applications:

- Volume Resistance measurements for small parts according to ANS/ESDA 11.12
- Resistance to Ground measurements for small parts and Equipments
- Resistance characteristics of small samples, small parts or those with fine features or irregular surfaces.
- ESD Laboratory measurements
- Incoming Quality measurements
- Production line audits
- Field Audits
- Conductive Rubber pad ensure good contact to hard surface of sample

#### Features:

- Light Weight pen shape probe
- Ergonomic Grip
- Lacquered Solid Brass Barrel
- Banana jack Connector
- Delrin Dielectric Material
- Optional Spring Force Limiter
- ATE Quality pogo pin probe
- Replaceable probe pin and contact
- Conductive Rubber Contact

**Part Number: 09-0101**





## RDM Industrial Products Inc.

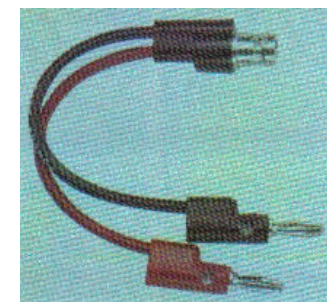
1652 Watson Court  
Milpitas, California 95035  
phone (408) 945-8400 fax (408) 945-8433



BNC connector for solid signal connection. Removeable connection for easy storage



Six – Foot (6') thin-line BNC-BNC coaxial cable for interference-free measurements. Inner signal and outer ground shielded cable.



BNC-Banana jack adapter used for most megohm meters and multimeters.

Physical Dimensions: Length: 5.9" (150mm) without cover, 6.5" (165mm) with cover.

Probe diameter: 0.5" (12.7mm);

Cover diameter: 0.63" (16mm).

Probe Weight: 3.0 oz. (85grams)

Body: Brass, acrylic and teflon

Finish: Blue Lacquer on Brass, Laser Marked

Dielectric Material: Teflon

Contact Material: Conductive Rubber Boots

Pin Dimensions: Inner Pin: 0.1" ( 2.54mm) diameter

Outer Pins: Ten each 0.06"

( 1.59mm) diameter at 0.258" ( 6.56mm)

bolt circle.



w w w . r d m - i n d . c o m



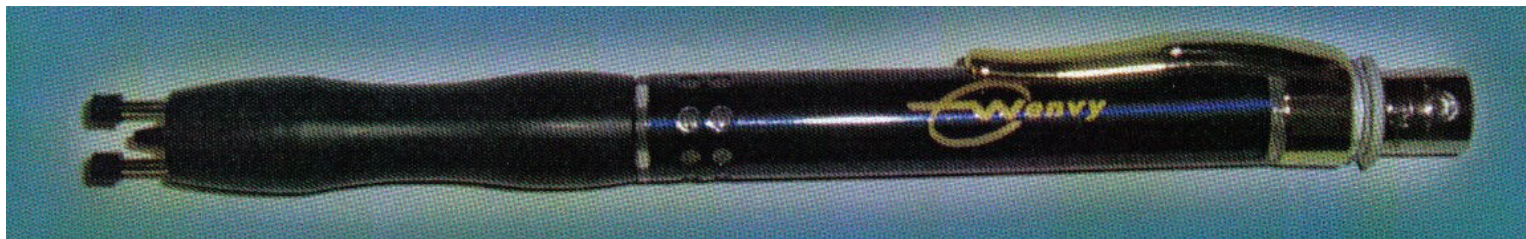


# RDM Industrial Products Inc.

1652 Watson Court  
Milpitas, California 95035  
phone (408) 945-8400 fax (408) 945-8433



## Two – Point Pen Probe



### Applications:

- Point- to- point Resistance measurements for small parts according to ANSI/ESDA 11.13
- Resistance characteristics of small samples, small parts or those with fine features or irregular surfaces
- ESD laboratory measurements
- Incoming Quality measurements
- Production line audits
- Field audits
- Conductive rubber pads ensure good contact to hard surface of sample
- Spring loaded probes conform to surfaces to different smoothness and topographies

### Features:

- Light Weight Pen – Shape Probe
- Ergonomic Grip
- Lacquered Solid – Brass Barrel
- BNC Connector
- Delrin Dielectric Material
- Built – in Spring Force Limiter
- ATE – Quality Pogo Pin Probes
- Replaceable Probe Pins and Contacts
- Conductive Rubber Contacts
- Meets ANSI/ESDA 11.13

**Part Number: 09 - 0102**



BNC – Banana jack adapter used for most megohm meters and multimeters



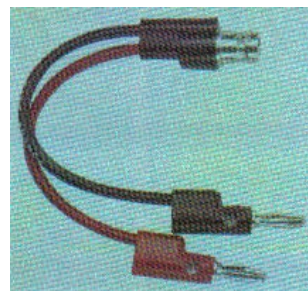


# RDM Industrial Products Inc.

1652 Watson Court  
Milpitas, California 95035  
phone (408) 945-8400 fax (408) 945-8433



BNC connector  
for solid  
signal connection.  
Removeable  
connection  
for easy storage



Six – Foot (6') thin  
line BNC-BNC  
coaxial cable for interference  
– free measurements.  
Inner signal and  
outer ground  
shielded cable.

Physical Dimensions: Length: 5.9" (150mm)  
without cover,  
6.5" (165mm) with  
cover.

Probe diameter: 0.5" (12.7mm);

Cover Diameter: 0.63" (16mm).

Probe Weight: 3.0 oz (85 grams)

Body: Brass, Acrylic and  
poly acetal (Delrin)

Finish: Blue Lacquer on  
Brass, Laser Marked

Dielectric Material: Delrin

Contact Material: Conductive Rubber Boots

Pin Dimensions: Pins: 0.1" (2.54mm)  
diameter

Pin Properties: Field-replaceable,  
spring-loaded, pogo-pin  
type ATE quality probes.  
Beryllium Copper with  
minimum 60 microinch  
hard gold.

Spring Force at Test:

Total Travel at Test:

Min. Sample Size:

Connection:

Cables:

Power:

Warranty:

1.0 Lbs. (0.45 kgs.)

0.3" (7.6mm)

0.62" (8.2mm) diameter

BNC with inner source  
and outer ground  
connections

75 ohm thin-line coaxial  
cable BNC to BNC

Not applicable. The  
probes are used in  
conjunction with megohm  
meters, electrometers.  
However, high voltage  
with limited current may  
be present on the source  
(outer) leads of the probes.  
Limited One Year



w w w . r d m - i n d . c o m

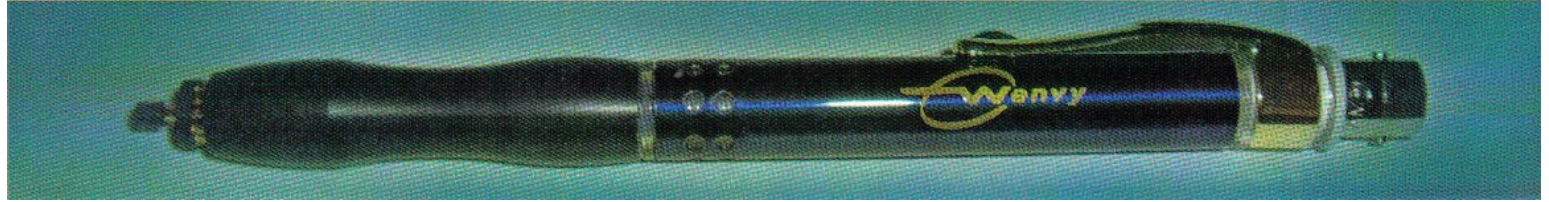


# RDM Industrial Products Inc.

1652 Watson Court  
Milpitas, California 95035  
phone (408) 945-8400 fax (408) 945-8433



## Microncentric Pen Probe



### Applications:

- Surface Resistance measurements for small parts according to ANS/ESDA 11.11.
- Surface Resistance characteristics of small samples, small parts or those with fine features or irregular surfaces.
- ESD laboratory measurements.
- Incoming Quality measurements.
- Production line audits.
- Field audits.
- Conductive rubber pads ensure good contact to hard surface of sample.
- Spring loaded probes conform to surfaces of different smoothness and topographies.

### Features:

- Light Weight Pen – Shape Probe
- Ergonomic Grip
- Lacquered Solid – Brass Barrel
- BNC Connector
- Teflon Dielectric Material
- Optional Spring Force Limiter
- ATE – Quality Pogo Pin Probes
- Replaceable Probe Pins and Contacts
- Conductive Rubber Contacts
- Meets ESDA 11.11 and ASTM – D – 257.



Part Number: \_\_\_\_\_





# RDM Industrial Products Inc.

1652 Watson Court  
Milpitas, California 95035  
phone (408) 945-8400 fax (408) 945-8433



Coiled cord with banana jack on both ends for easy connection to megohm meters or multimeters.



Banana receptacle built into the end of the pen probe. No wire to fumble when putting away probe

Physical Dimensions: Length:5.9" (150mm) without cover, 6.5" (165mm) with cover.

Probe diameter: 0.5" (12.7mm); Cover diameter:0.63" (16mm)

Probe Weight: 1.5 oz. (40 grams)

Body: Brass, acrylic and poly acetal (Delrin)

Finish: Blue Lacquer on Brass, Laser Marked

Dielectric Material: Delrin

Contact Material: Conductive Rubber Boots

Pin Dimensions: Pin: 0.1" (2.54mm) diameter

Pin Properties: Field-replacable, spring-loaded, pogo-pin type ATE quality probe Beryllium Copper with minimum 60 microinch hard gold.

Spring Force at Test: 0.5 Lbs. (0.28kgs.)

Total Travel at Test: 0.3" (7.6mm)

Min. Sample Size: 0.12" (3.0mm) diameter

Connection: Banana Receptacle

Cables: Coiled cord with banana jack on both ends

Power: Not applicable. The probes are used in conjunction with megohm meters, electrometers However, high voltage with limited current may be present on the source (outer) leads of the probes.

Warranty: Limited One Year



## RDM Industrial Products Inc.

1652 Watson Court  
Milpitas, California 95035  
phone (408) 945-8400 fax (408) 945-8433



# *Basic ESD Awareness*

We offer a two hour class on EOS / ESD.

- Beginning with an explanation of what it means, we will educate your team to know where and how it can be caused, what the dangers could mean for your business, and steps you can take to eliminate it.
- A certification will be awarded to all who enroll and complete the class.

w w w . r d m - i n d . c o m



## RDM Industrial Products Inc.

1652 Watson Court  
Milpitas, California 95035  
phone (408) 945-8400 fax (408) 945-8433



# *ESD AUDIT*

- Test floors, work stations surfaces or mats, chairs, shelving, storage areas and containers for Surface Resistivity.
- Visually check all personnel and work areas for compliance with standard ESD procedures.
- Audits start with the receiving area and end with the shipping area.
- Audits are detailed and complete.
- All problems that are found reported and a solution is provided.

STATIC CONTROL  
TEST & INSPECTION



# RDM Fully-Assembled Static Control Workstations

## RDM Industrial Products Inc.

1652 Watson Court  
Milpitas, California 95035  
phone (408) 945-8400 fax (408) 945-8433



### ESD Static Control Workstations & Tables

Designed for use with Sensitive Electronic Components...

#### Standard Features:

- ESD Static Control plastic laminated work surface.
- Grounding Jacks located on each front leg for wrist strap connection.
- Grounding Lead provided for frame and top to connect to Client's Ground.
- Fully-Welded Tubular Steel Frame Connections - No open connections to collect dust.
- Durable Tubular Steel Table Legs w/ Leveler Feet. Casters available as option - See below...
- Standard Polyurethane paint finish is as durable as any powder-coat finish once fully cured.
- Powder-Coated finish available as option...

#### Standard Sizes:

We are the manufacturer - Feel free to specify your custom dimension requirements above or choose from the following...

"A" - 48", 60" & 72" Width (Right-to-Left)  
 "B" - 30" & 36" Depth (Front-to-Back)  
 "C" - 30" (Sitting "Desk" Height), 34" (ADA/Accessible Height), 36" (Standing Tasks)  
 "D" - 12" to 18"  
 "E" - 18" to 24" (Add 3 1/2" to your under-shelf clearance requirement)

### ESD Static Control Workstation Options

- Static Dissipative Laminated Work surface
- Static Dissipative ESD Table Mat (s) for shock-sensitive products  
 ---Note: ESD Mats are not needed for tables manufactured with ESD laminated surface (s)
- Static Dissipative ESD Floor Mat (s)  
 ---Note: ESD Floor Mats are not needed for floors designed with static dissipative surface (s), such as ESD tiling or vinyl flooring.

Grounding Accessories Available...



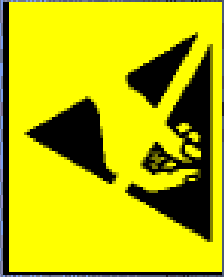
Model F-103P

**ATTENTION**  
OBSERVE PRECAUTIONS  
ELECTROSTATIC  
SENSITIVE DEVICES

- Ionizing Systems (Tabletop, Overhead, Air Guns, Etc.)
- Grounding Ports/ Jacks  
 Note: Standard two total grounding ports/ jacks are provided on the front legs of workstation (s)
- Wrist Straps (s)  
 ---Note: Standard adjustable elastic wrist strap with coiled cord.

w w w . r d m - i n d . c o m





STATIC CONTROL  
Product & Services



# RDM Industrial Products Inc.

1652 Watson Court  
Milpitas, California 95035  
phone (408) 945-8400 fax (408) 945-8433

